

Coleorton, Church Town, St John's Chapel yard (SK397169)



Waxcaps

The Chapel grounds are small in area, but exceptional in terms of waxcap numbers and diversity. In 2024, notable species were c. 40 Pink Waxcaps and over 100 Heath Waxcaps, plus Crimson Waxcaps and a few of the scarce Splendid Waxcaps.

The waxcap species recorded in 2023 – 2025 were:

Meadow Waxcap	<i>Cuphophyllus pratensis</i>
Snowy Waxcap	<i>Cuphophyllus virgineus</i>
Parrot Waxcap	<i>Gliophorus psittacinus</i>
Slimy Waxcap	<i>Gliophorus irrigatus</i>
Butter Waxcap	<i>Hygrocybe ceracea</i>
Scarlet Waxcap	<i>Hygrocybe coccinea</i>
Oily Waxcap	<i>Hygrocybe quieta</i>
Golden Waxcap	<i>Hygrocybe chlorophana</i>
Honey Waxcap	<i>Hygrocybe reidi</i>
Pink Waxcap	<i>Porpolomopsis calyptriformis</i>
Crimson Waxcap	<i>Hygrocybe punicea</i>
Heath Waxcap	<i>Gliophorus laetus</i>
Splendid Waxcap	<i>Hygrocybe splendidissima</i>

All the photos of waxcaps on the next page were taken by Sue Timms at St John's Chapel grounds on 6th November 2024.



Meadow Waxcap (06/11/2024)



Crimson Waxcap (06/11/2024)



Scarlet Waxcap (06/11/2024)



Heath Waxcap (06/11/2024)



Splendid Waxcap (06/11/2024)



Pink Waxcaps (06/11/2024)

Wildflowers, trees and shrubs

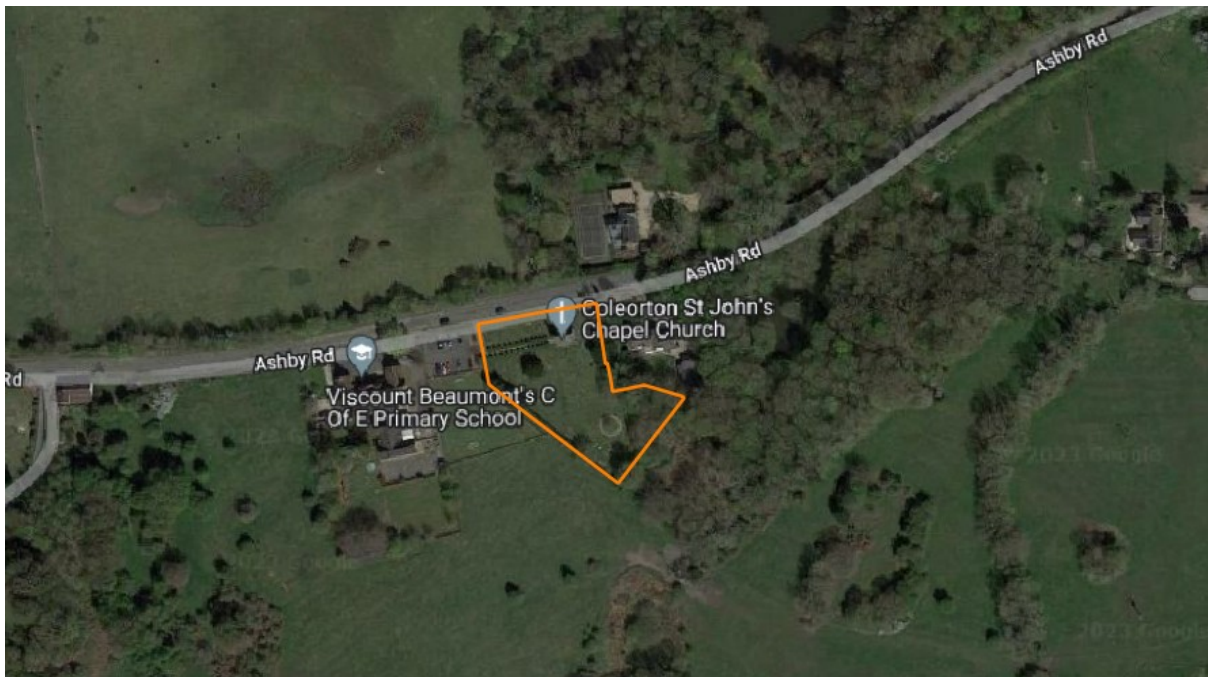
The grassland is also rich in wildflower species, including acid grassland which is a declining habitat that is a priority for biodiversity in our area. It is noted as a Local Wildlife Site because of this – i.e. is of special conservation importance within Leicestershire and Rutland. This is a non-statutory designation with the main function of informing and advising the landowner of a site's value. Grassland is species-rich, including Tormentil, Ox-eye Daisy, Knapweed, Heath Bedstraw, Lady's Smock, Meadow Buttercup, Bulbous Buttercup, Autumnal Hawkbit, Field Wood-rush, Spring Sedge, Bird's-foot Trefoil, Common Sorrel, Pignut and Sheep Sorrel.

The chapel was built in 1857. I assume the grassland has its origin in the pasture-land present before it was constructed, and has possibly experienced continued management and (apart from burials) lack of any disturbance since then. Ref. <https://www.coleortonheritage.org.uk/st-johns-chapel.html>

A full plant species list is below, recorded by Sue Timms on 22/11/2023 and 04/05/2024.

<i>Acer platanoides</i>	Norway Maple	
<i>Acer pseudoplatanus</i>	Sycamore	
<i>Achillea millefolium</i>	Yarrow	
<i>Anthoxanthum odoratum</i>	Sweet Vernal-grass	
<i>Anthriscus sylvestris</i>	Cow Parsley	
<i>Arabidopsis thaliana</i>	Thale Cress	
<i>Arenaria serpyllifolia</i>	Thyme-leaved Sandwort	
<i>Arum maculatum</i>	Cuckoo Pint	
<i>Bellis perennis</i>	Daisy	
<i>Cardamine pratensis</i>	Lady's Smock	
<i>Carex caryophylla</i>	Spring Sedge	on mound under golden-leaved privet
<i>Carex hirta</i>	Hairy Sedge	
<i>Centaurea nigra</i> agg.	Knapweed	
<i>Conopodium majus</i>	Pignut	
<i>Crataegus monogyna</i>	Hawthorn	
<i>Crepis capillaris</i>	Smooth Hawk's-beard	
<i>Digitalis purpurea</i>	Foxglove	
<i>Dryopteris filix-mas</i>	Male Fern	
<i>Ficaria verna</i>	Celandine	
<i>Fragaria vesca</i>	Wild Strawberry	
<i>Galium saxatile</i>	Heath Bedstraw	Abundant, occasionally dominant
<i>Geranium robertianum</i>	Herb Robert	
<i>Geum urbanum</i>	Herb Bennet	
<i>Glechoma hederacea</i>	Ground Ivy	
<i>Hedera helix</i>	Ivy	
<i>Heracleum sphondylium</i>	Hogweed	
<i>Hieracium</i>	a Hawkweed	spotted leaves
<i>Hyacinthoides non-scripta</i>	Bluebell	
<i>Hyacinthoides x massartiana</i>	Hybrid Bluebell	
<i>Hypochaeris radicata</i>	Common Cat's-ear	
<i>Ilex aquifolium</i>	Holly	
<i>Lamium album</i>	White Dead-nettle	
<i>Leontodon autumnalis</i>	Autumnal Hawkbit	
<i>Leucanthemum vulgare</i>	Ox-eye Daisy	frequent
<i>Lotus corniculatus</i>	Bird's-foot Trefoil	frequent
<i>Lotus pedunculatus</i>	Greater Bird's-foot Trefoil	
<i>Luzula campestris</i>	Field Wood-rush	
<i>Lysimachia nummularia</i>	Creeping Jenny	
<i>Myosotis sylvatica</i>	Wood Forget-me-not	
<i>Pilosella aurantiaca</i>	Orange Hawkweed	
<i>Pilosella officinarum</i>	Mouse-ear Hawkweed	
<i>Plantago lanceolata</i>	Ribwort Plantain	
<i>Potentilla erecta</i>	Tormentil	frequent
<i>Potentilla sterilis</i>	Barren Strawberry	

<i>Primula vulgaris</i>	Primrose	
<i>Prunella vulgaris</i>	Selfheal	
<i>Quercus robur</i>	English Oak	
<i>Ranunculus acris</i>	Meadow Buttercup	
<i>Ranunculus bulbosus</i>	Bulbous Buttercup	
<i>Ranunculus repens</i>	Creeping Buttercup	
<i>Rubus fruticosus agg.</i>	Bramble	
<i>Rumex acetosa</i>	Common Sorrel	
<i>Rumex acetosella</i>	Sheeps Sorrel	frequent
<i>Rumex crispus</i>	Curled Dock	
<i>Sambucus nigra</i>	Elder	
<i>Senecio jacobaea</i>	Ragwort	
<i>Stachys sylvatica</i>	Hedge Woundwort	
<i>Stellaria graminea</i>	Lesser Stitchwort	
<i>Stellaria holostea</i>	Greater Stitchwort	
<i>Taraxacum</i>	Dandelion	
<i>Taxus baccata</i>	Yew	
<i>Trifolium repens</i>	White Clover	
<i>Ulmus</i>	Elm	
<i>Veronica chamaedrys</i>	Germander Speedwell	
<i>Vicia sepium</i>	Bush Vetch	
<i>Viola riviniana</i>	Common Dog-violet	



Sue Timms, 07/11/2025